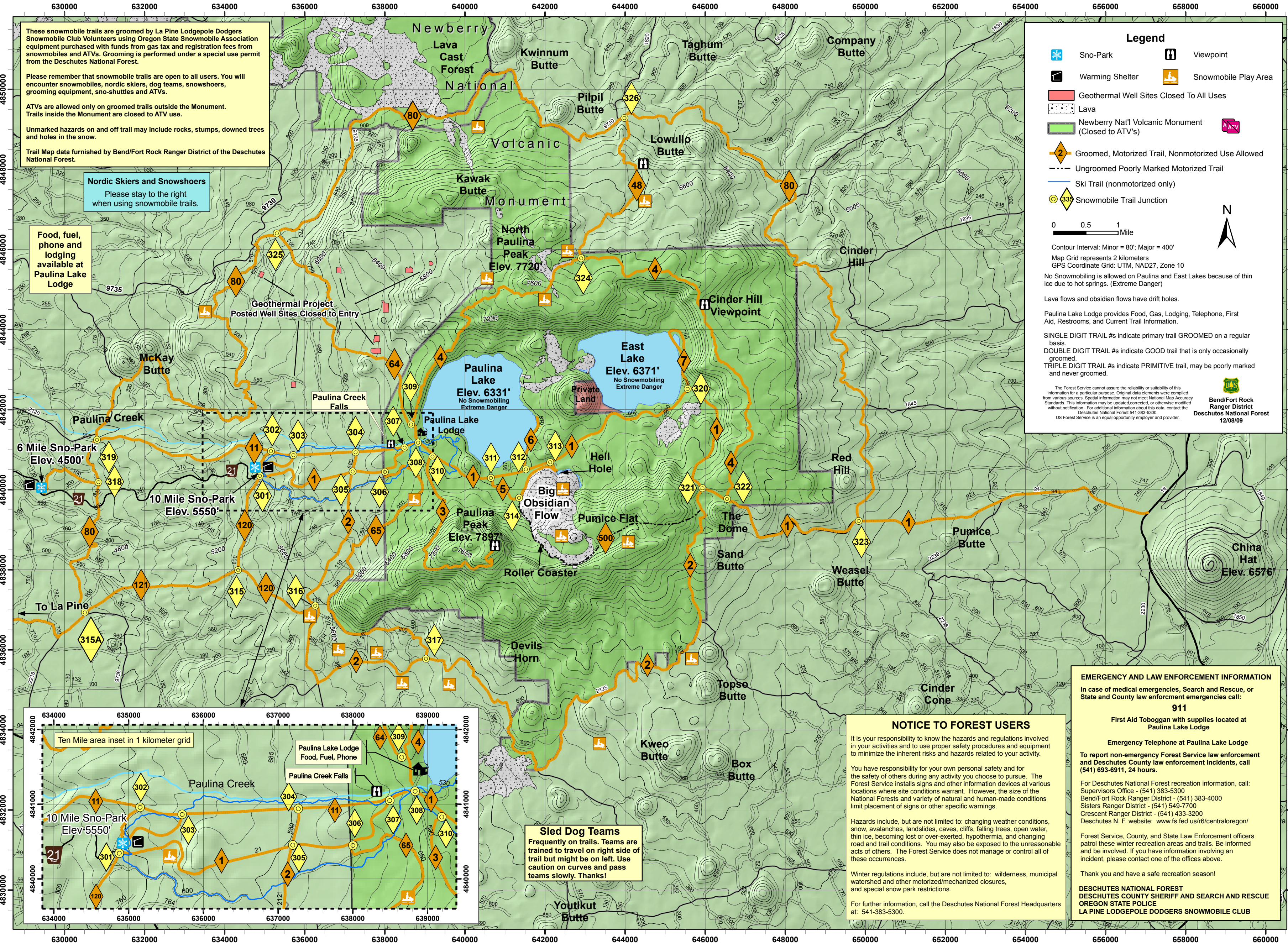


# Newberry National Volcanic Monument Snowmobile Trail Map



These snowmobile trails are groomed by La Pine Lodgepole Dodgers Snowmobile Club Volunteers using Oregon State Snowmobile Association equipment purchased with funds from gas tax and registration fees from snowmobiles and ATVs. Grooming is performed under a special use permit from the Deschutes National Forest.

Please remember that snowmobile trails are open to all users. You will encounter snowmobiles, nordic skiers, dog teams, snowshoers, grooming equipment, sno-shuttles and ATVs.

ATVs are allowed only on groomed trails outside the Monument. Trails inside the Monument are closed to ATV use.

Unmarked hazards on and off trail may include rocks, stumps, downed trees and holes in the snow.

Trail Map data furnished by Bend/Fort Rock Ranger District of the Deschutes National Forest.

**Nordic Skiers and Snowshoers**  
Please stay to the right when using snowmobile trails.

**Food, fuel, phone and lodging available at Paulina Lake Lodge**

### Legend

- Sno-Park
- Viewpoint
- Warning Shelter
- Snowmobile Play Area
- Geothermal Well Sites Closed to All Uses
- Lava
- Newberry Nat'l Volcanic Monument (Closed to ATVs)
- Groomed, Motorized Trail, Nonmotorized Use Allowed
- Ungroomed Poorly Marked Motorized Trail
- Ski Trail (nonmotorized only)
- Snowmobile Trail Junction

0 0.5 1 Mile

Contour Interval: Minor = 80'; Major = 400'

Map Grid represents 2 kilometers  
GPS Coordinate Grid: UTM, NAD27, Zone 10

No Snowmobiling is allowed on Paulina and East Lakes because of thin ice due to hot springs. (Extreme Danger)

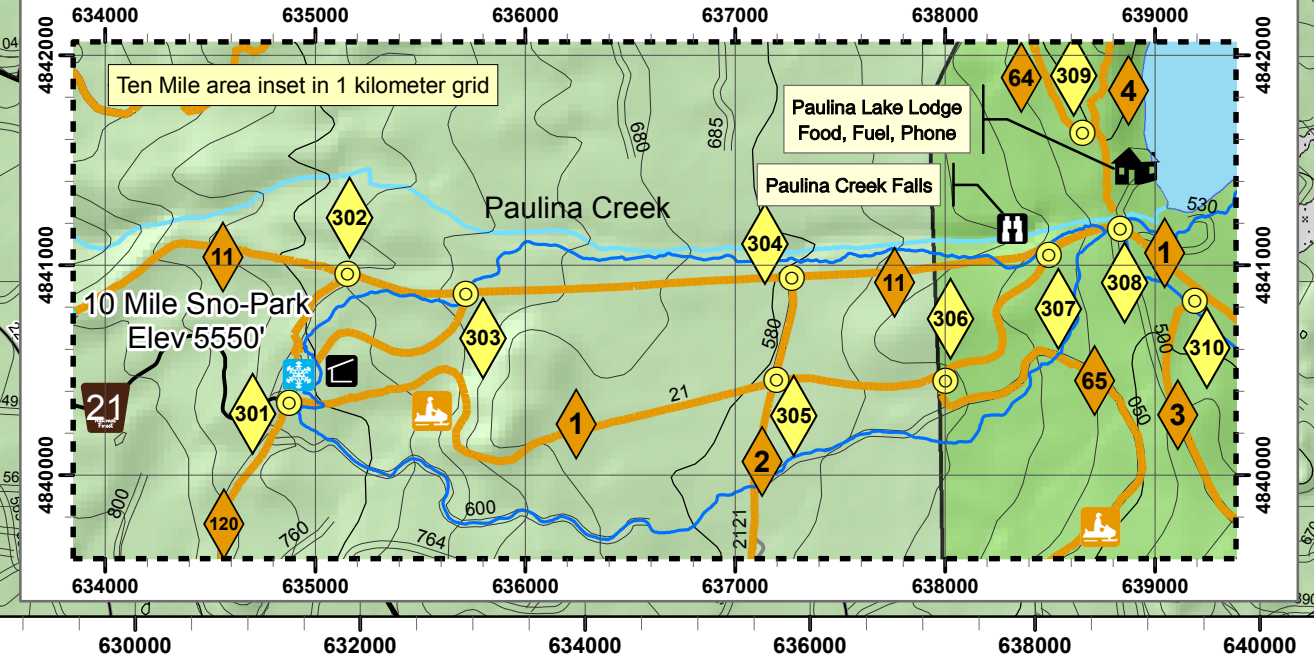
Lava flows and obsidian flows have drift holes.

Paulina Lake Lodge provides Food, Gas, Lodging, Telephone, First Aid, Restrooms, and Current Trail Information.

SINGLE DIGIT TRAIL #s indicate primary trail GROOMED on a regular basis.  
DOUBLE DIGIT TRAIL #s indicate GOOD trail that is only occasionally groomed.  
TRIPLE DIGIT TRAIL #s indicate PRIMITIVE trail, may be poorly marked and never groomed.

The Forest Service cannot assure the reliability or suitability of this information for a particular purpose. Original data elements were compiled from various sources. Spatial information may not meet National Map Accuracy Standards. This information may be updated, corrected, or otherwise modified without notification. For additional information about this data, contact the Deschutes National Forest 541-383-5300. US Forest Service is an equal opportunity employer and provider.

**Bend/Fort Rock Ranger District**  
Deschutes National Forest  
12/08/09



**Sled Dog Teams**  
Frequently on trails. Teams are trained to travel on right side of trail but might be on left. Use caution on curves and pass teams slowly. Thank!

**NOTICE TO FOREST USERS**

It is your responsibility to know the hazards and regulations involved in your activities and to use proper safety procedures and equipment to minimize the inherent risks and hazards related to your activity.

You have responsibility for your own personal safety and for the safety of others during any activity you choose to pursue. The Forest Service installs signs and other information devices at various locations where site conditions warrant. However, the size of the National Forests and variety of natural and human-made conditions limit placement of signs or other specific warnings.

Hazards include, but are not limited to: changing weather conditions, snow, avalanches, landslides, caves, cliffs, falling trees, open water, thin ice, becoming lost or over-exerted, hypothermia, and changing road and trail conditions. You may also be exposed to the unreasonable acts of others. The Forest Service does not manage or control all of these occurrences.

Winter regulations include, but are not limited to: wilderness, municipal watershed and other motorized/mechanized closures, and special snow park restrictions.

For further information, call the Deschutes National Forest Headquarters at: 541-383-5300.

**EMERGENCY AND LAW ENFORCEMENT INFORMATION**

In case of medical emergencies, Search and Rescue, or State and County law enforcement emergencies call:

**911**

First Aid Toboggan with supplies located at Paulina Lake Lodge

Emergency Telephone at Paulina Lake Lodge

To report non-emergency Forest Service law enforcement and Deschutes County law enforcement incidents, call (541) 693-6911, 24 hours.

For Deschutes National Forest recreation information, call:  
Supervisors Office - (541) 383-5300  
Bend/Fort Rock Ranger District - (541) 383-4000  
Sisters Ranger District - (541) 549-7700  
Crescent Ranger District - (541) 433-3200  
Deschutes N. F. website: [www.fs.fed.us/ri/centraloregon/](http://www.fs.fed.us/ri/centraloregon/)

Forest Service, County, and State Law Enforcement officers patrol these winter recreation areas and trails. Be informed and be involved. If you have information involving an incident, please contact one of the offices above.

Thank you and have a safe recreation season!

**DESCHUTES NATIONAL FOREST**  
**DESCHUTES COUNTY SHERIFF AND SEARCH AND RESCUE**  
**OREGON STATE POLICE**  
**LA PINE LODGEPOLE DODGERS SNOWMOBILE CLUB**